

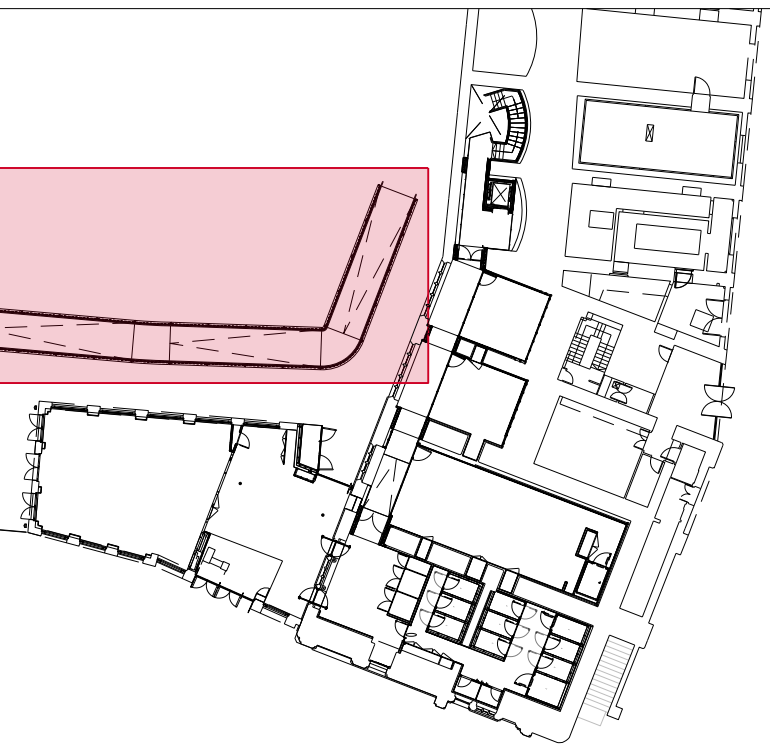


General Notes:

To be read in conjunction with Service Engineer, Structural Engineers and Heritage Architects information.

Drawings are based on survey data and may not accurately represent what is physically present.

All areas and methodologies are subject to full condition survey following strip out.



Existing Fabric

Copyright of Jamie Fobert Architects Ltd 2023

Issue/Revision	Date	Rev
Stage 4	18 07 25	A
Tender Draft	24 10 25	B

Drawing No. TOL\_JFA\_01\_XX\_DW\_A\_5150